

HTT35A

For all variants of the HTT35A

Hardware Manual

Revision 1.1



Contents

- HTT35A Technical Specifications 3
 - Available Headers 3
 - Dimensional Drawings 4
- Characteristics..... 6
 - Optical 6
 - Power 6
 - Environmental..... 6
- Options..... 7
 - Power Options 7
- Recommended Accessories 8
 - HDMI Cable 8
 - USB Cable 8
 - Power Adaptor 8
- Support 8
- Contact..... 8

Revision History

Revision	Date	Description	Author
1.1	February 22, 2018	Added -CTB variant drawing	Daniel Divino
1.0	January 20 2018	First Release	Henry Jakl

HTT35A Technical Specifications

The HTT35A is a 3.5" TFT display with an HDMI interface. The 320x240 resolution offers crisp images, and video feedback, with 24-bit Full colour capabilities. The HTT can be configured with resistive, capacitive, or non-touch panels, making this display suitable for any application.

Available Headers

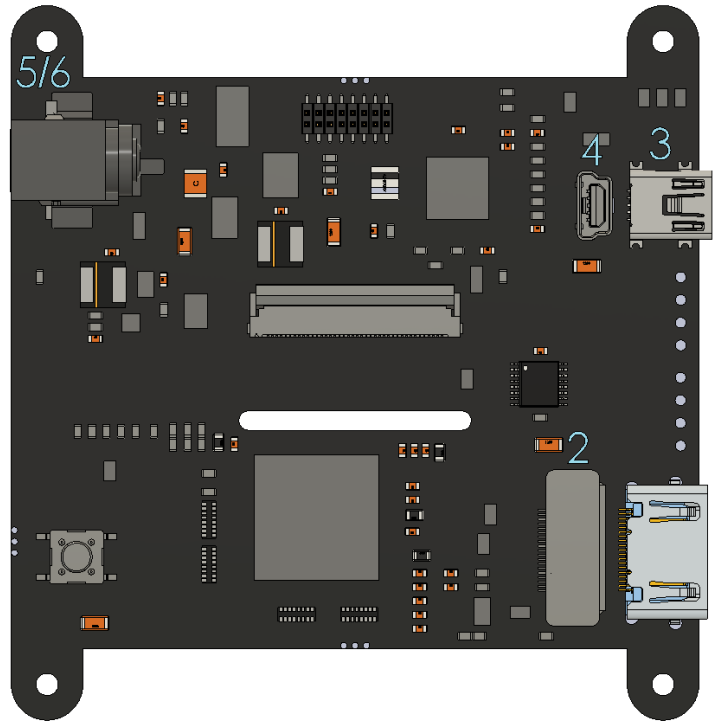


Figure 1: Headers

Table 1: Headers and Mates

#	Header	Standard Mate	Population
1	HDMI Port, Horizontal, Type A Standard	Type A Standard HDMI Cable	-H5
2	HDMI Port, Vertical, Type A Standard	Type A Standard HDMI Cable	-H6
3	Mini USB, Horizontal: Touch & Power	Mini-B USB Cable	-H5
4	Mini USB, Vertical: Touch & Power	Mini-B USB Cable	-H6
5	Barrel Jack: 2.1mm Center Positive	Power Adaptor	-H6
6	External Power, 2-1445057-2	Micro MATE-N-LOCK 1445022-2	-VPT model

Dimensional Drawings

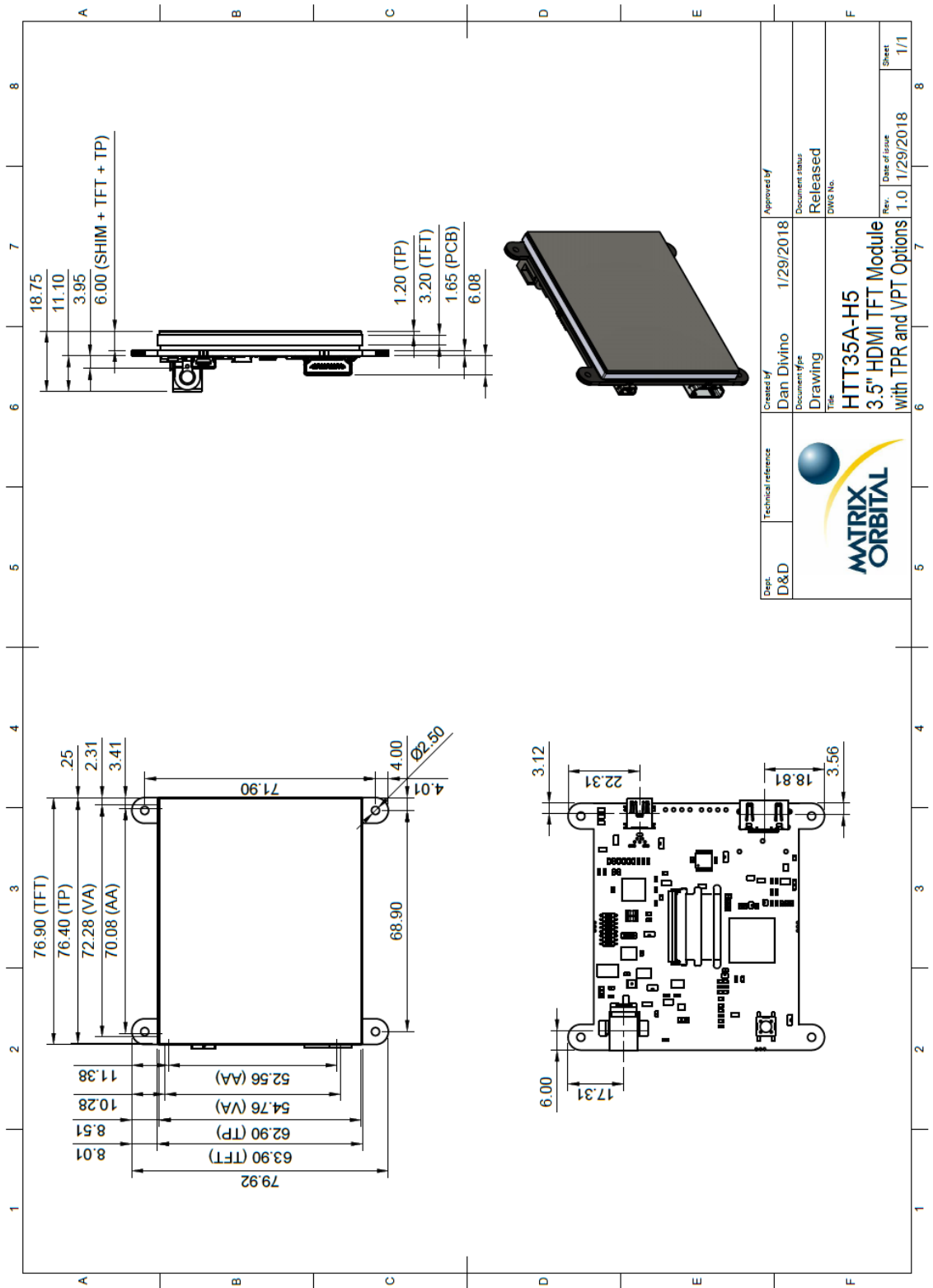
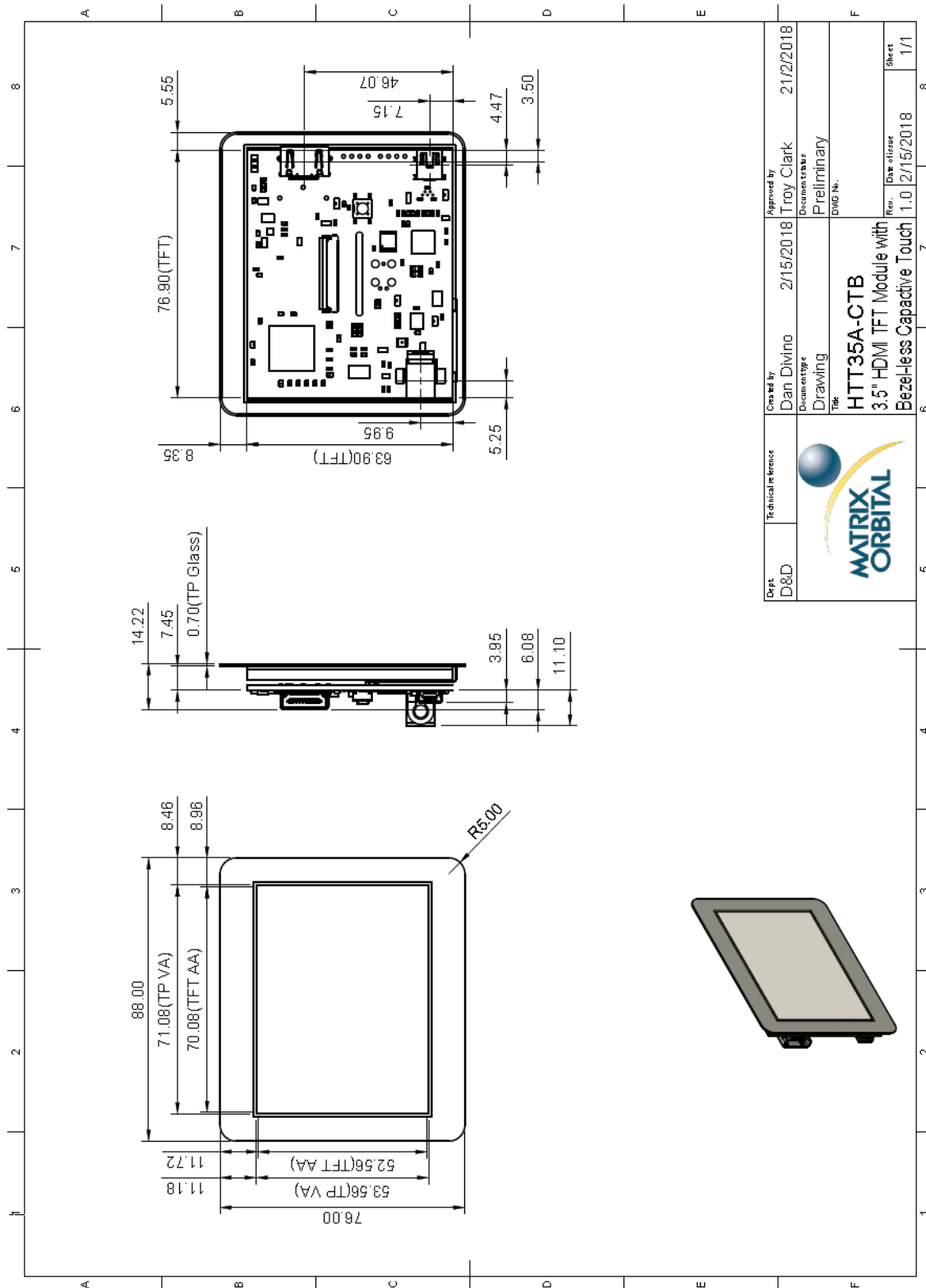


Figure 2: Resistive Touch Panel HTT35A Dimensional Drawing



Dept D&D	Technical Reference	Created by Dan Divino	2/15/2018	Approved by Troy Clark	2/12/2018
		Document type Drawing		Document status Preliminary	
		Title HTT35A-CTB		Drawn by Dan Divino	
		3.5" HDMI TFT Module with Bezel-less Capacitive Touch		Rev. 1.0	Date of Issue 2/15/2018
				Sheet 1/1	

Figure 3: Bezel-less Capacitive Touch Panel HTT35A Dimensional Drawing

Characteristics

Optical

Table 2: Optical Characteristics

Module Size	76.90 x 79.92 x 12.53	mm
Viewing Area	72.90 x 55.44	mm
Active Area	70.08 x 52.56	mm
Pixel Pattern	320 x 240 x 24bit RGB	
Pixel Pitch	0.219 x 0.219	mm
Luminance	550	cd/m ²
Viewing Angle	60° Left, Right, Up 50° Down	
Contrast Ratio	300:1	
Backlight Half-Life	20,000 hours	

Power

Table 3: Typical Power Characteristics

Parameter	Min	Typ	Max	Unit	Remarks
Logic	-	TBD	-	mA	Backlight Off
Backlight	0	-	TBD	mA	Off, Mid, Max

Table 4: Maximum Power Characteristics

Parameter	Min	Typ	Max	Unit	Remarks
Supply Voltage	4.75	5.0	5.25	V	Standard Voltage (V5)
	5.0	12.0	35.0	V	Wide Voltage (VPT)

Environmental

Table 5: Environmental Characteristics

Operating Temperature	-20°C to +70°C
Storage Temperature	-30°C to +80°C
Operating Relative Humidity*	90% (T < 60°C)

*Note: No condensation at any temperature

Options

Table 6: Part Numbering Scheme

HTT	35	A	-TPR	-BLM	-B0	-H5	-CH	-V5
1	2	3	4	5	6	7	8	9

Table 7: Display Options

#	Designator	Options
1	Product Type	HTT: Graphic TFT Display
2	Display Size	35: 3.5"
3	Screen Type	A: A Type
4	Touch	-TPN: No touch panel -TPR: Resistive touch panel -TPC: Capacitive touch panel -CTB: Bezel-less capacitive touch panel
5	Backlight	-BLS: Brightness < 300 Nit -BLM: 300 Nit < Brightness < 600 Nit -BLH: 600 Nit < Brightness < 1000 Nit -BLD: Brightness > 1000 Nit
6	Bezel	-B0: None
7	Headers	-H5: Horizontal Connectors -H6: Vertical Connectors
8	Protocol	-CH: HDMI interface
9	Voltage	-V5: 5.0V Input Voltage -VPT: Regulated 5V - 35V Input Voltage

Power Options

Table 8: Powering Options

Option	Voltage Input
V5	USB Header
VPT	Barrel Jack/External Power Header

Recommended Accessories

HDMI Cable



Figure 4: HDMI Cable

Part Number:
HDMI3FT or HDMI6FT

Description:
3ft (1m) or 6ft (2m) HDMI Cable

USB Cable



Figure 5: EXTMUSB3FT

Part Number:
EXTMUSB3FT

Description:
3ft (1m) Mini-B USB Cable

Power Adaptor



Figure 6: PWR-ACDC-5V2A

Part Number:
PWR-ACDC-5V2A

Description:
9ft (2.7m) AC to DC power adapter with 2.1mm center positive barrel jack.

Input Voltage: 100-240V AC
Output Voltage: 5V DC @ 2A

AC Plugs Included: North American (NEMA), Europlug (Type C), UK (Type G), Australia/China/New Zealand/Argentina (Type I)

Support

Phone: 403.229.2737

Email: support@matrixorbital.ca

Manuals and Drivers: <http://www.matrixorbital.ca>

Forums: <http://www.lcdforums.com/forums>

Contact

Sales

Phone: 403.229.2737

Email: sales@matrixorbital.ca

Support

Phone: 403.229.2737

Email: support@matrixorbital.ca

Online

Purchasing: www.matrixorbital.com

Support: www.matrixorbital.ca