



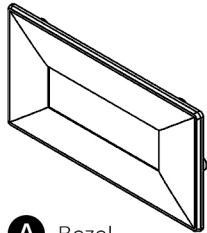
# Matrix Orbital

Mounting Bezel Instructions  
BEZ-204A-V1-W-KIT

## Contact

[support@matrixorbital.ca](mailto:support@matrixorbital.ca)  
[sales@matrixorbital.ca](mailto:sales@matrixorbital.ca)  
(403) 229-2737  
[www.matrixorbital.ca](http://www.matrixorbital.ca)  
[www.matrixorbital.com](http://www.matrixorbital.com)  
[www.lcdforums.com](http://www.lcdforums.com)

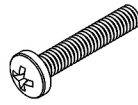
# Package Contents



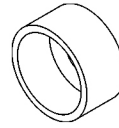
**A** Bezel



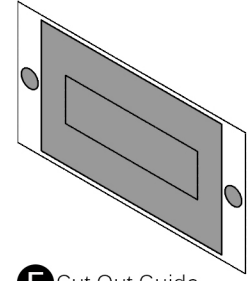
**B** 1/8" Screw (x2)



**C** 5/8" Screw (x4)



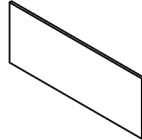
**D** Cup Washer (x2)



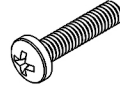
**E** Cut Out Guide



**F** 6mm Spacer (x4)



**G** Window



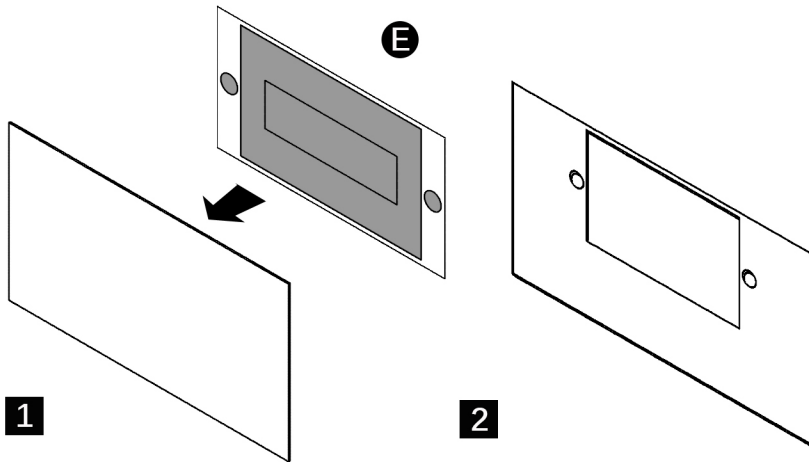
**H** 3/8" Screw (x4)



**I** 1/16" Spacer (x4)

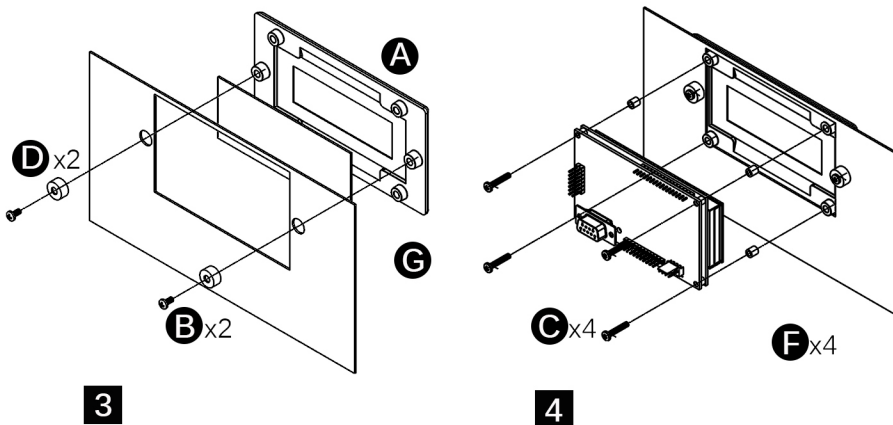
# Directions

Before starting, choose location on panel for bezel, ensuring adequate clearance inside of enclosure.



**1** Place **E** Cut Out Guide on outside of panel at desired location, using the text for correct orientation.

**2** Cut hole along solid lines, removing shaded area. Drill out circular areas using 9.5mm or 3/8" bit. Remove **E** Cut Out Guide.



**3** Remove protective film from **G** Window. Affix **G** Window to **A** Bezel. Attach **A** Bezel to panel using **D** Cup Washers and **B** 1/8" Screws. Be careful to not over tighten.

**4** Attach display to **A** Bezel using **C** 5/8" Screws and **F** 6mm Spacers.

## NOTES:

If mounting GLK series display, use **H** 3/8" Screws and **F** 6mm Spacers  
 -If mounting OK series display, use **H** 3/8" screws and **I** 1/16" Spacers